

THE SKYLAR
TWO-STOREY TOWNHOME COLLECTION

2 BEDROOM, 2.5 BATH
OPTIONAL 3 BEDROOM



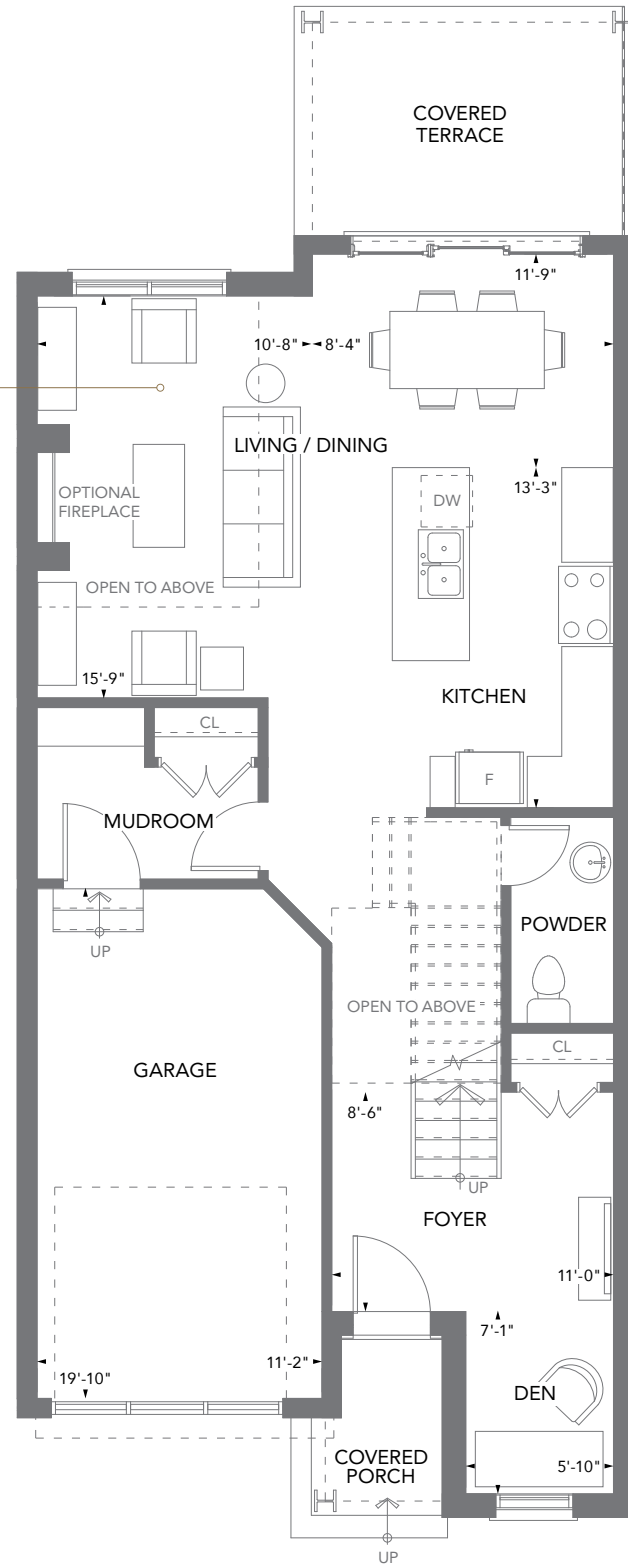
Rendering is artist's concept only. E.&O.E.



FONTHILLYARDS.COM

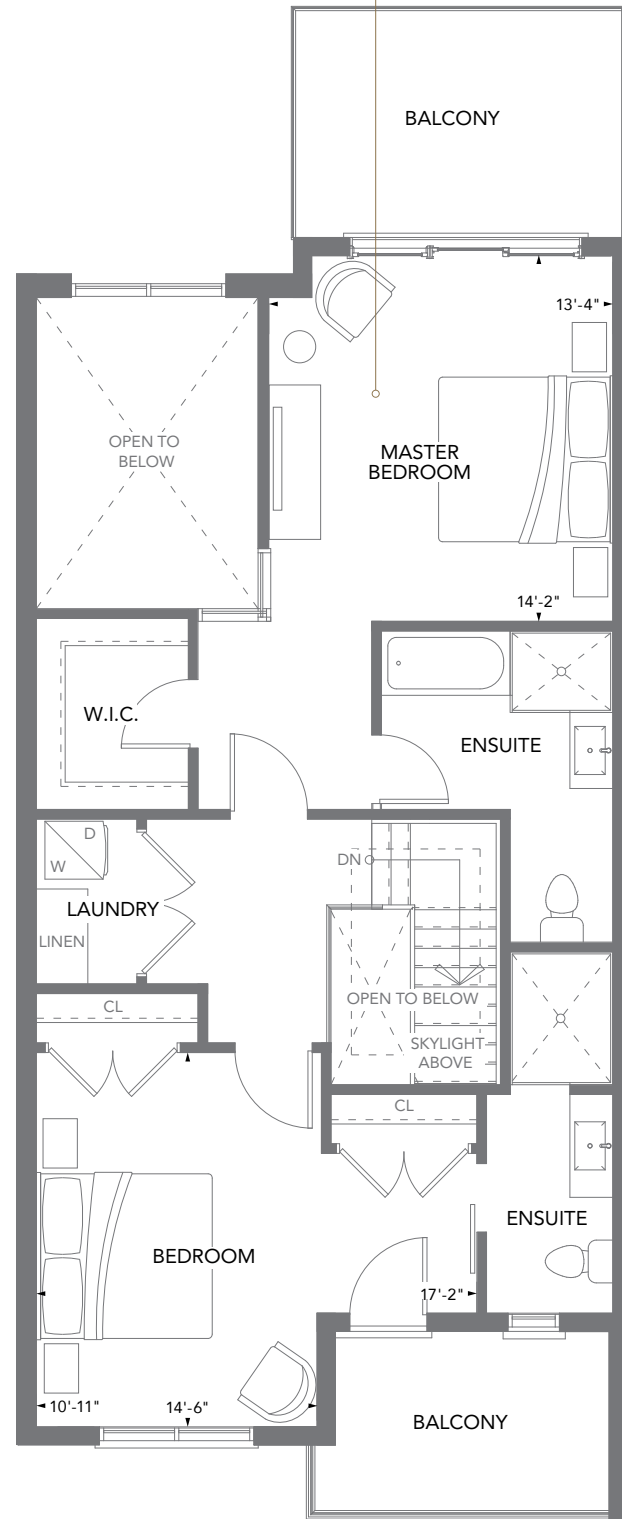
NIAGARA ONTARIO
FONTHILL
— YARDS —
BESPOKE TOWNS & CONDOS

Smartly designed open-concept living space creates a cosy and stylish ambience.

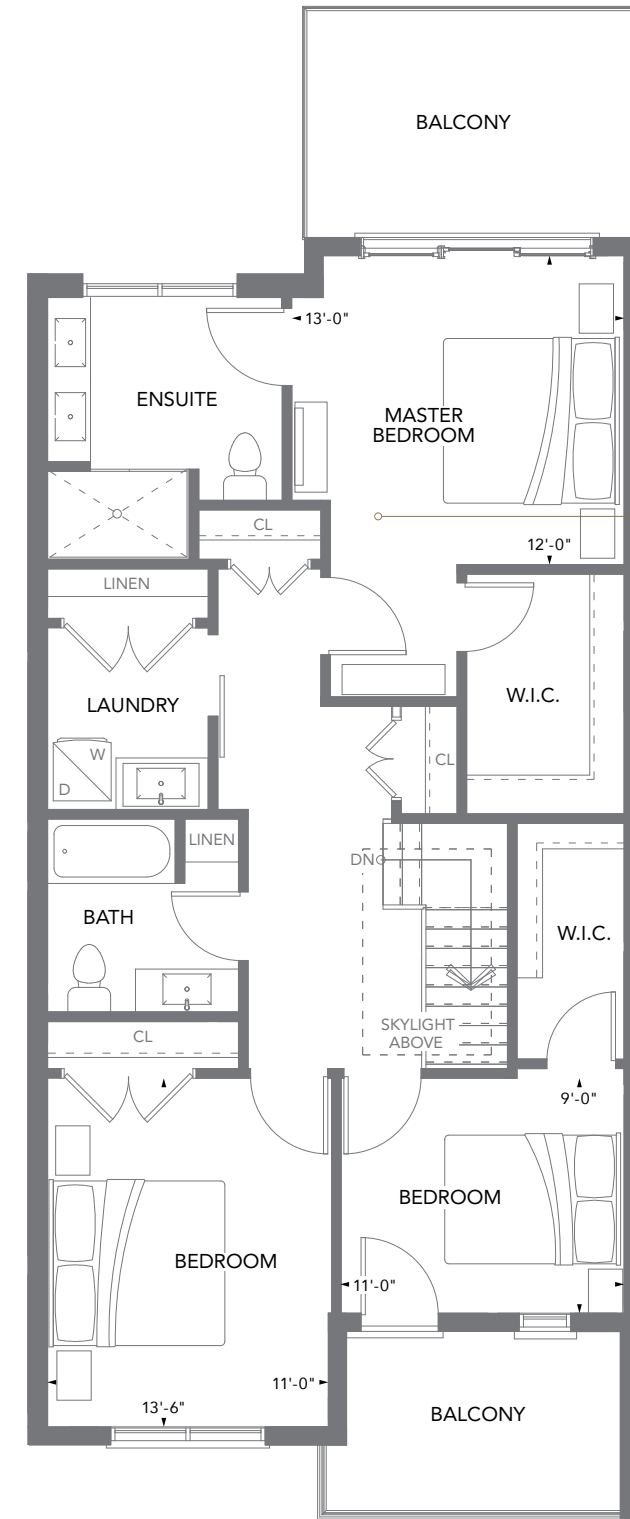


MAIN FLOOR

A stylish Master Suite with open to below space, ensuite bath and large walk-in closet.



SECOND FLOOR



OPTIONAL SECOND FLOOR
3 BEDROOM

Beautiful Master Suite with oversized walk-in closet and ensuite with large shower, plus two more bedrooms – one with a balcony and walk-in closet.

THE SKYLAR

TWO-STORY TOWNHOME COLLECTION

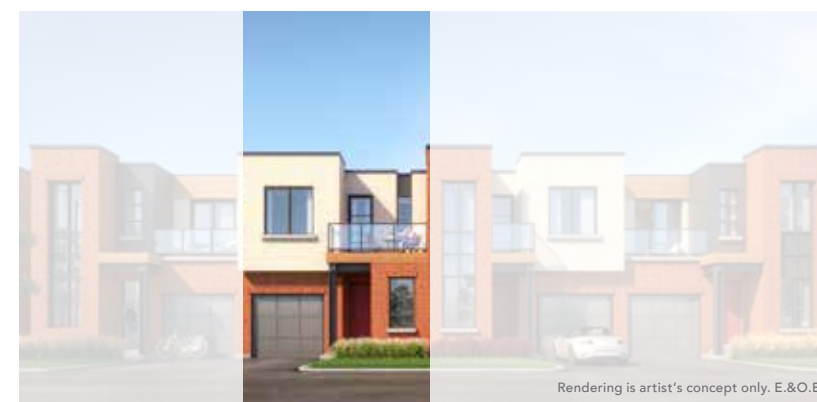
All dimensions are approximate and subject to normal construction variances. Dimensions may exceed the useable floor area. Sizes and specifications are subject to reasonable change without notice. Furniture is displayed for illustration purposes only and shall not reflect the electrical, mechanical or plumbing plan for the suite. Suites are sold unfurnished. Terrace and façade variations may apply. Contact an authorized sales representative for further details. E.&O.E. ©Aiva 2018. All rights reserved. March 2018.

THE DAVID

THE SKYLAR

THE MARCEL

THE DAVID



2 BEDROOM, 2.5 BATH
INTERIOR 1,733 SQ.FT.
EXTERIOR 297 SQ.FT.

OPTIONAL 3 BEDROOM, 2.5 BATH
INTERIOR 1,855 SQ.FT.
EXTERIOR 297 SQ.FT.